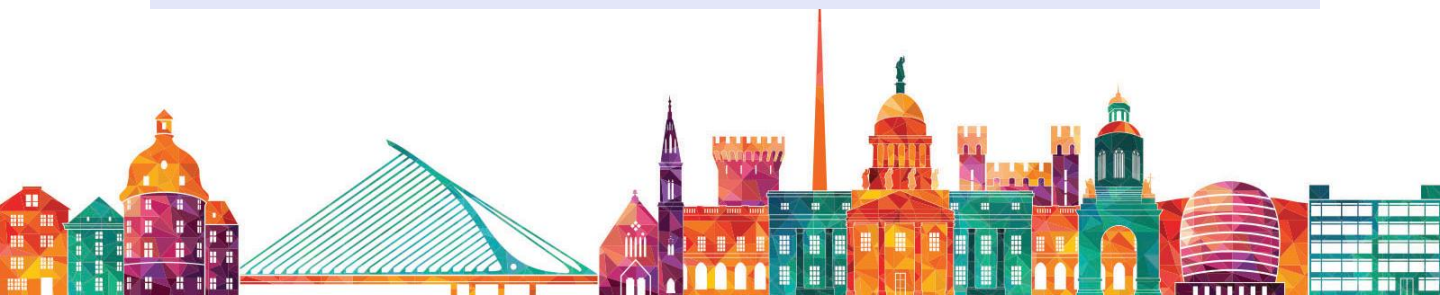




Summer Programmes

DUBLIN CITY

11 – 18 años
Del 29 Junio al 25 Agosto
(mínimo 1 semana)



Always School ofrece cada verano un programa de inmersión lingüística para jóvenes de 11 a 18 años, en colaboración con la universidad de Dublín (líder irlandés en este tipo de cursos), donde se imparten las clases. El campus incluye muchas comodidades: restaurantes, centro deportivo, biblioteca, teatro, pistas de tenis, campo de fútbol... Además de un ambiente perfecto para sentar las bases de una maravillosa experiencia en el extranjero.

El programa incluye:

- ✓ Clases de inglés (20/semana – en clases internacionales)
- ✓ Alojamiento en familias nativas certificadas o residencia universitaria (en habitación Individual)
- ✓ Vuelos
- ✓ Pensión completa (incluso si existen necesidades dietéticas especiales)
- ✓ Actividades por las tardes y noches
- ✓ Excursiones los fines de semana
- ✓ Monitor bilingüe acompañante
- ✓ Coordinador de grupo (nativo)
- ✓ Teléfono de emergencias 24 horas
- ✓ Traslados de aeropuerto
- ✓ Seguro de viaje
- ✓ Tarjetas de transporte (LEAP)

A los mejores precios:

	1 semana	2 semanas	3 semanas	4 semanas
En familia	1260€	1880€	2490€	3190€
En residencia	1390€	2290€	3090€	3990€



Itinerario:

DAILY ITINERARY	SUNDAY 24 JUNE	MONDAY 25 JUNE	TUESDAY 26 JUNE	WEDNESDAY 27 JUNE	THURSDAY 28 JUNE	FRIDAY 29 JUNE	SATURDAY 30 JUNE
0800hrs	Free Day	Breakfast	Breakfast	Breakfast	Breakfast	Breakfast	Breakfast
0930-1230hrs		English Class	English Class	English Class	English Class	English Class	Day Trip to Glendalough By Coach
1300hrs		Lunch	Lunch	Lunch	Lunch	Lunch	Packed Lunch Provided
Afternoon		Vist Dublin City Centre	Botanic Gardens	National Gallery	Sports Activites	St, Stephen's Green	
1830hrs	Dinner	Dinner	Dinner	Dinner	Dinner	Dinner	Dinner
1930-2100hrs	Free	Sports	Free	Bingo Night	Free	Treasure Hunt	Free

DAILY ITINERARY	SUNDAY 1 JULY	MONDAY 2 JULY	TUESDAY 3 JULY	WEDNESDAY 4 JULY	THURSDAY 5 JULY	FRIDAY 6 JULY	SATURDAY 7 JULY
0800hrs	Breakfast	Breakfast	Breakfast	Breakfast	Breakfast	Breakfast	Breakfast
0930-1230hrs	Day Trip to Howth By Train	English Class	English Class	English Class	English Class	English Class	Day Trip to Kilkenny By Coach
1300hrs		Lunch	Lunch	Lunch	Lunch	Lunch	Packed Lunch Provided
Afternoon	Packed Lunch Provided	Ha'penny Bridge & Dublin Spire	Collins Barracks	Natural History Museum	Sports Activites	Merrion Square	
1830hrs	Dinner	Dinner	Dinner	Dinner	Dinner	Dinner	Dinner
1930-2100hrs	Free	Sports	Free	Table Quiz	Free	Rounders	Free

DAILY ITINERARY	SUNDAY 8 JULY	MONDAY 9 JULY	TUESDAY 10 JULY	WEDNESDAY 11 JULY	THURSDAY 12 JULY	FRIDAY 13 JULY	SATURDAY 14 JULY
0800hrs	Breakfast	Breakfast	Breakfast	Breakfast	Breakfast	Breakfast	Breakfast
0930-1230hrs	Day Trip to Bray By Train	English Class	English Class	English Class	English Class	English Class	Day Trip to Wexford By Coach
1300hrs		Lunch	Lunch	Lunch	Lunch	Lunch	Packed Lunch Provided
Afternoon	Packed Lunch Provided	Temple Bar	Museum of Modern Art	Dublin Docklands	Sports Activites	Archeology Museum	
1830hrs	Dinner	Dinner	Dinner	Dinner	Dinner	Dinner	Dinner
1930-2100hrs	Free	Sports	Free	Photo Hunt	Free	Music Night	Free

DAILY ITINERARY	SUNDAY 15 JULY	MONDAY 16 JULY	TUESDAY 17 JULY	WEDNESDAY 18 JULY	THURSDAY 19 JULY	FRIDAY 20 JULY	SATURDAY 21 JULY
0800hrs	Breakfast	Breakfast	Breakfast	Breakfast	Breakfast	Breakfast	Breakfast
0930-1230hrs	Day Trip to Malahide By Train	English Class	English Class	English Class	English Class	English Class	Day Trip to Carlingford By Coach
1300hrs		Lunch	Lunch	Lunch	Lunch	Lunch	Packed Lunch Provided
Afternoon	Packed Lunch Provided	Molly Malone Statue	National Gallery	Clontarf & Bull Island	Sports Activites	George's Arcade & Grafton St	
1830hrs	Dinner	Dinner	Dinner	Dinner	Dinner	Dinner	Dinner
1930-2100hrs	Free	Sports	Free	World Cup	Free	Scavenger Hunt	Free

DAILY ITINERARY	SUNDAY 22 JULY	MONDAY 23 JULY	TUESDAY 24 JULY	WEDNESDAY 25 JULY	THURSDAY 26 JULY	FRIDAY 27 JULY	SATURDAY 28 JULY
0800hrs	Breakfast	Breakfast	Breakfast	Breakfast	Breakfast	Breakfast	Breakfast
0930-1230hrs	Day Trip to Dundrum By Tram	English Class	English Class	English Class	English Class	English Class	Day Trip to Glendalough By Coach
1300hrs		Lunch	Lunch	Lunch	Lunch	Lunch	Packed Lunch Provided
Afternoon	Packed Lunch Provided	Vist Dublin City Centre	Botanic Gardens	National Gallery	Sports Activites	St, Stephen's Green	
1830hrs	Dinner	Dinner	Dinner	Dinner	Dinner	Dinner	Dinner
1930-2100hrs	Free	Sports	Free	Bingo Night	Free	Treasure Hunt	Free

DAILY ITINERARY	SUNDAY 29 JULY	MONDAY 30 JULY	TUESDAY 31 JULY	WEDNESDAY 1 AUGUST	THURSDAY 2 AUGUST	FRIDAY 3 AUGUST	SATURDAY 4 AUGUST
0800hrs	Breakfast	Breakfast	Breakfast	Breakfast	Breakfast	Breakfast	Breakfast
0930-1230hrs	Day Trip to Howth By Train Packed Lunch Provided	English Class	English Class	English Class	English Class	English Class	Day Trip to Kilkenny By Coach
1300hrs		Lunch	Lunch	Lunch	Lunch	Lunch	Packed Lunch Provided
Afternoon		Ha'penny Bridge & Dublin Spire	Collins Barracks	Natural History Museum	Sports Activites	Merrion Square	
1830hrs	Dinner	Dinner	Dinner	Dinner	Dinner	Dinner	Dinner
1930-2100hrs	Free	Sports	Free	Table Quiz	Free	Rounders	Free

DAILY ITINERARY	SUNDAY 5 AUGUST	MONDAY 6 AUGUST	TUESDAY 7 AUGUST	WEDNESDAY 8 AUGUST	THURSDAY 9 AUGUST	FRIDAY 10 AUGUST	SATURDAY 11 AUGUST
0800hrs	Breakfast	Breakfast	Breakfast	Breakfast	Breakfast	Breakfast	Breakfast
0930-1230hrs	Day Trip to Bray By Train Packed Lunch Provided	English Class	English Class	English Class	English Class	English Class	Day Trip to Wexford By Coach
1300hrs		Lunch	Lunch	Lunch	Lunch	Lunch	Packed Lunch Provided
Afternoon		Temple Bar	Museum of Modern Art	Dublin Docklands	Sports Activites	Archeology Museum	
1830hrs	Dinner	Dinner	Dinner	Dinner	Dinner	Dinner	Dinner
1930-2100hrs	Free	Sports	Free	Photo Hunt	Free	Music Night	Free

DAILY ITINERARY	SUNDAY 12 AUGUST	MONDAY 13 AUGUST	TUESDAY 14 AUGUST	WEDNESDAY 15 AUGUST	THURSDAY 16 AUGUST	FRIDAY 17 AUGUST	SATURDAY 18 AUGUST
0800hrs	Breakfast	Breakfast	Breakfast	Breakfast	Breakfast	Breakfast	Breakfast
0930-1230hrs	Day Trip to Malahide By Train Packed Lunch Provided	English Class	English Class	English Class	English Class	English Class	Day Trip to Carlingford By Coach
1300hrs		Lunch	Lunch	Lunch	Lunch	Lunch	Packed Lunch Provided
Afternoon		Molly Malone Statue	National Gallery	Clontarf & Bull Island	Sports Activites	George's Arcade & Grafton St	
1830hrs	Dinner	Dinner	Dinner	Dinner	Dinner	Dinner	Dinner
1930-2100hrs	Free	Sports	Free	World Cup	Free	Scavenger Hunt	Free

DAILY ITINERARY	SUNDAY 19 AUGUST	MONDAY 20 AUGUST	TUESDAY 21 AUGUST	WEDNESDAY 22 AUGUST	THURSDAY 23 AUGUST	FRIDAY 24 AUGUST	SATURDAY 25 AUGUST
0800hrs	Breakfast	Breakfast	Breakfast	Breakfast	Breakfast	Breakfast	Breakfast
0930-1230hrs	Day Trip to Dundrum By Tram Packed Lunch Provided	English Class	English Class	English Class	English Class	English Class	Day Trip to Glendalough By Coach
1300hrs		Lunch	Lunch	Lunch	Lunch	Lunch	Packed Lunch Provided
Afternoon		Vist Dublin City Centre	Botanic Gardens	National Gallery	Sports Activites	St, Stephen's Green	
1830hrs	Dinner	Dinner	Dinner	Dinner	Dinner	Dinner	Dinner
1930-2100hrs	Free	Sports	Free	Bingo Night	Free	Treasure Hunt	Free